

Bitzer 6H-35.2 (x2)

Specifications

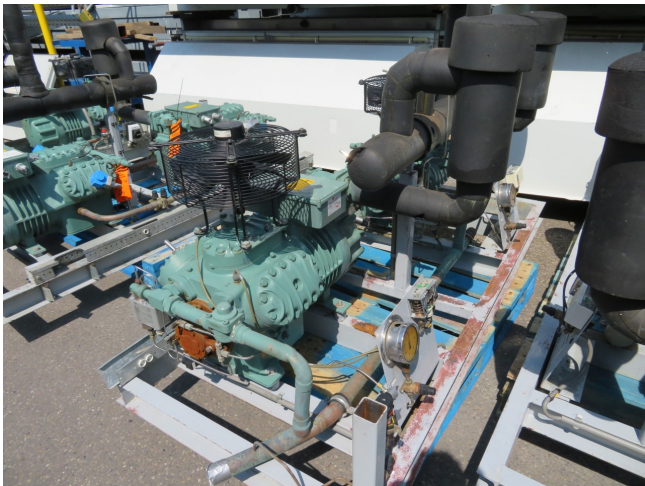
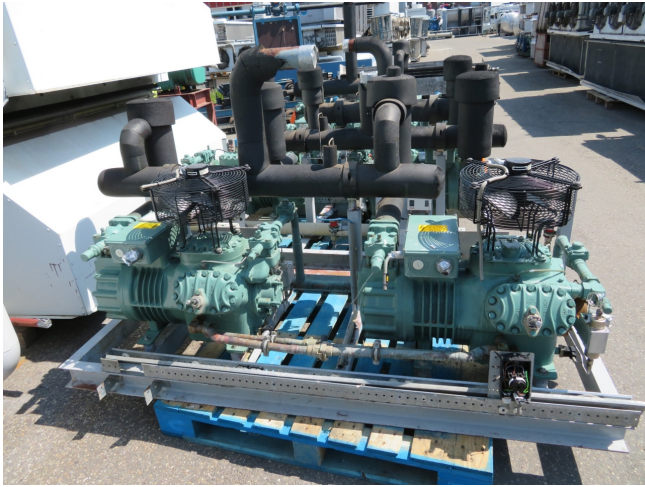
Brand	Bitzer
Type	6H-35.2 (x2)
Refrigerant	Freon
Refrigerant type	R 404 A or other types
kW at +10°C/+40°C	232,6*
kW at 0°C/+40°C	178,6
kW at -5°C/+40°C	148,2
kW at -10°C/+40°C	121,8
kW at -20°C/+40°C	79,2
kW at -30°C/+40°C	47,6
On steel base frame	✓
Pressure safety switches	✓
Hp/Lp/Op	
Pressure gauges	✓
Hp/Lp/Op	
Control panel	✓
Remarks	# // *Capacity based on +7,5°C/+40°C
Package / Rack	✓
Sizes	1700x1100x1400 mm (LxWxH)
Stock	3

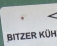


Description

Used Bitzer 6H-35.2 (x2)

Used Compressor Unit Bitzer 6H-35.2 (x2). This compressor unit has there own original control panel.





 Typ: 6H-352Y-40P
 SNr: 1570504318
 BITZER KÜHLMASCHINENBAU GMBH
 Made in E.C.

Nennspannung	Fluss	Refrigerant	Installation	Refrigerant	Charge
V 3Ph	Hz	A (max)	A (Y)	A (Y)	kg
380-420	50	81	147	282	30,5
480	60	81	147	282	33,5

IP 54 (NO/HD max. 32 bar)
 Pressure

max.
 32
 min.
 378 103-02




 BITZER KÜHLMASCHINENBAU GMBH & CO. KG
 SINDELFINGEN, GERMANY

MOTORVERDICHTER	Typ	6H-35	1000/276	FABRIK-NR.
JAHR	PS/KW	35 / 25	10,5 m ³ /h	FÖRDERVOL.
V.A.	BETR-	A	A	ROTOR-
V.A.A.	STROM	81 A	A	BLOCKIERT
PH/Hz	3~/	50	IP 54	1450 / U/min
PRÜF.Ü.DR.	32,5 bar	81 / 147	282	30,5 / MAX.BETR.Ü.DR. NO/HD-SEITE



